

Eugène Jancourt (1815-1901)  
1er Solo pour le Basson, Op. 23 (1856)

a son Ami HAEUSSER

Orchestration by Charles-David Lehrer

Violon I

**Maestoso.**

*ff*

*Dolce*

*p*

*pp*

*fz*

**Risoluto**

*ff*

**Andante con moto amabile.**

*Rall.*

*pp*

*Dolce*

*Suivez*

*mf*

*p*

**a Tempo primo.**

*Rall.*

*pp*

*ff*

*f*

*pp*

*ff* Serrez

*Suivez*

*pp*

*p*

**a Tempo primo.**

*Suivez*

*f*

*p*

Piu allegro. Grazioso

62 *f* Suivez

69 *mf*

74 *ff*

79 *f*

84 *ff*

89

93 Rall. *p*

97 Piu lento.

101 *p* **Largo con espressivo.**

104

107 *Cresc.* *fp* *pp*

111 *Cresc.* *Dim.*

118 *pp* *Cresc.* *ff*



Dim.

Largement

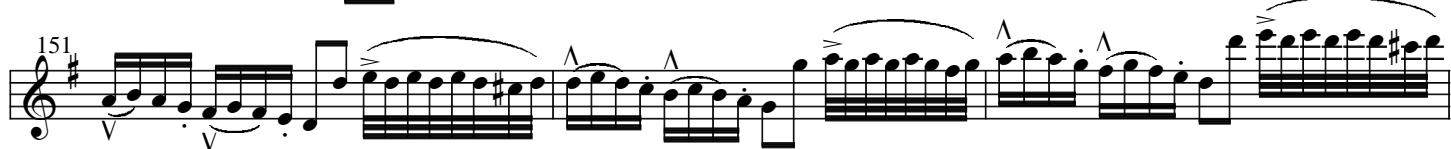
*p*



*pp*



**Allegro.**

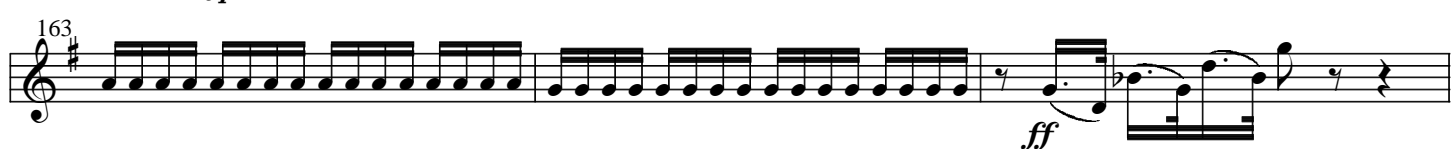


**Allegro maestoso.**



*fp*

*mf*



*ff*



*pp*

*f*

*ff*



*p*

*ff*

**Allegro moderato.**

*pp*



**Poco ritenuto**

*p*



*f*

*ff*

187

192

*p*

198

*Poco ritenuto*

*ff*

204

*p*

210

*a Tempo primo.*

216

*Cresc.*

*ff*

Detailed description: This musical score is for a single melodic line in G major, spanning measures 187 to 216. The notation is on a single staff in treble clef. Measures 187-191 show a melodic phrase with eighth and sixteenth notes. Measure 192 begins with a piano (*p*) dynamic and features a series of eighth notes with accents. Measures 193-197 continue this eighth-note pattern. Measure 198 starts with a slur over a group of notes. Measures 199-203 are marked *Poco ritenuto* and feature a descending melodic line. Measure 204 begins with a piano (*p*) dynamic and a new melodic phrase. Measures 205-209 continue this phrase. Measure 210 is marked *a Tempo primo.* and features a series of eighth notes. Measures 211-215 show a melodic phrase with eighth notes and a crescendo (*Cresc.*) leading to a fortissimo (*ff*) dynamic. Measure 216 concludes the passage with a final note and a double bar line.